

Provider Relations

Annual CAP Report

2026 Contracting





Introduction

Blue Cross and Blue Shield of Kansas (BCBSKS) is the insurer Kansans trust with their health. Much of that status can be attributed to the high-quality care delivered by our network providers. This document outlines the details related to our 2026 Competitive Allowance Program (CAP) offer and includes the specifics of our Quality-Based Reimbursement Program (QBRP), which has been designed to reward your efforts toward maintaining high-quality standards.

BCBSKS continues to offer contracting providers top-notch services, including provider relations representatives and provider network enrollment. Our provider relations representatives conduct in-person visits, trainings and workshops. We are also available to conduct these activities virtually based on the provider's preference. We want to thank you for your versatility in working with our provider relations team to meet your needs. We also want to extend our appreciation to you and your staff for caring for our members.

If you need clarification or additional information related to any information included herein, contact your provider relations representative or provider network enrollment.

Provider Relations Staff	Title	Toll-Free Phone #	Local Phone #	Email
Melissa Brown	Associate Vice President	(800) 432-0216	(785) 291-7807	melissa.brown@bcbsks.com
Janne Robinson	Director	(800) 432-0216	(785) 291-8227	janne.robinson@bcbsks.com
Darin Fieger	Manager	(800) 432-0216	(785) 291-6617	darin.fieger@bcbsks.com
Michele Stanley	Manager	(800) 432-0216	(785) 291-6207	michele.stanley@bcbsks.com
Provider Network Enrollment		(800) 432-0216	(785) 291-4135	ProviderNetworkEnrollment@bcbsks.com



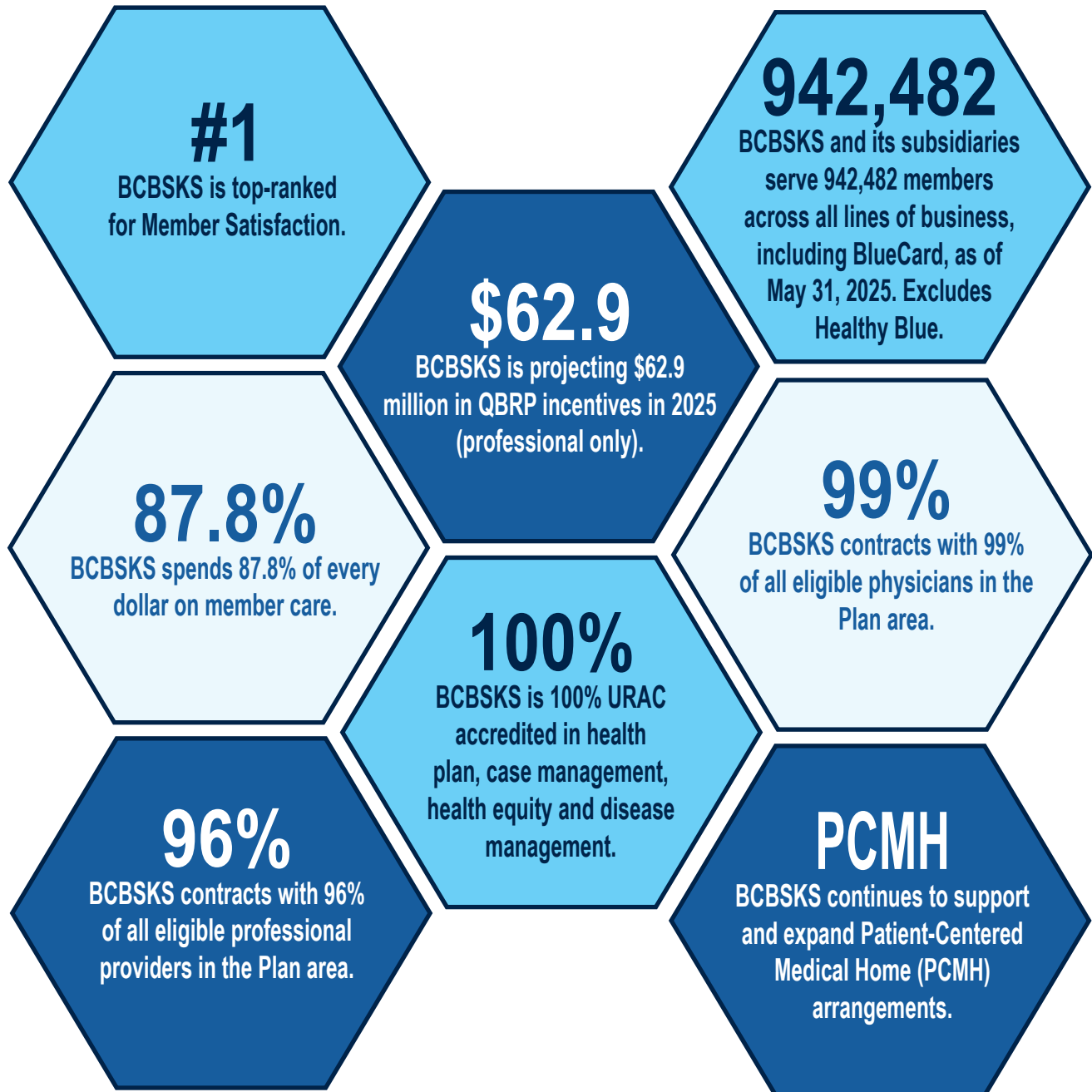
Introduction

Provider Relations Representative	Toll-Free Phone #	Local Phone #	Email
Beth Downie	(800) 432-0216	(785) 291-8813	beth.downie@bcbsks.com
Brandon Taylor	(800) 432-0216	(785) 261-9969	brandon.taylor@bcbsks.com
Christy Richards	(800) 432-0216	(785) 291-4272	christy.richards@bcbsks.com
Dustin Kimmel	(800) 432-0216	(785) 291-7236	dustin.kimmel@bcbsks.com
Emily Emmot	(800)432-0216	(785)291-8819	emily.emmot@bcbsks.com
Heather Schultz	(800) 432-0216	(785) 291-7724	heather.schultz@bcbsks.com
Jena Brown	(800) 432-0216	(785) 291-7653	jena.brown@bcbsks.com
Jennie Fellers	(800) 432-0216	(785) 291-8207	jennie.fellers@bcbsks.com
Jennifer Falk	(800) 432-0216	(785) 291-8651	jennifer.falk@bcbsks.com
Jessicca Doolittle	(800) 432-0216	(316) 269-1676	jessicca.doolittle@bcbsks.com
Jonathan Tuck	(800) 432-0216	(785) 291-8862	jonathan.tuck@bcbsks.com
Karlene Clarke	(800) 432-0216	(316) 269-1602	karlene.clarke@bcbsks.com
Kayla Straub	(800) 432-0216	(620) 663-1313	kayla.straub@bcbsks.com
Kyle Abbott	(800) 432-0216	(316) 269-1678	kyle.abbott@bcbsks.com
Patrick Artzer	(800) 432-0216	(785) 291-6289	patrick.artzer@bcbsks.com
Sadie Maxwell	(800) 432-0216	(785) 291-8830	sadie.maxwell@bcbsks.com
Vickie Kloxin	(800) 432-0216	(316) 269-1677	vickie.kloxin@bcbsks.com



By the numbers

Blue Cross and Blue Shield of Kansas provides the best service in the industry and strives to be the health insurance company of choice for our members and providers.



The value in contracting

BCBSKS provides business services that bridge the gap between the delivery and financing of healthcare. Services creating significant value for contracting providers include:

Local member contracts structured to allow charges up to 100% of the MAP for participating CAP providers (subject to member benefits).	Opportunity to earn additional revenue through the Quality-Based Reimbursement Program (QBRP).
Detailed claim-payment information provided to both you and the member explaining their financial responsibilities.	Direct payment from BCBSKS , which minimizes your collection efforts and increases cash flow.
A dedicated field staff available to visit your office to address any operational issues.	Electronic remittance advice and payment capabilities.
Access to Provider Network Enrollment personnel to answer policy questions or obtain assistance with claim coding questions.	Opportunity to participate on specialty liaison committees and provide direct input in the development of medical policies and emerging issues.
Contracting providers' names made available to BCBSKS members through a number of sources including the internet, employer groups, and other contracting providers for referral purposes, which increases the potential for new patients.	Periodic workshops conducted by Provider Relations staff that delivers continuous training for new and experienced medical assistant staff, helping update your staff on new administrative procedures to ensure timely claim payments.
Website (bcbssks.com) and self-service access through Availity, which improve office efficiency and maximize employee resources. <ul style="list-style-type: none"> Secure services include detailed claims payment information, member eligibility, remittance advice, and provider enrollment information. Other services include training modules, podcasts, newsletters, manuals, policy memos, and medical policies/guidelines. Provider portal to attest to your data, review your QBRP incentives, and correspond with BCBSKS. 	

NOTE — In 2026, for the majority of our business, non-contracting providers' services will be paid direct to the member at a charge up to 80% of the MAP (i.e. there is a 20% penalty for members receiving services from a non-contracting provider), subject to member benefits. In addition, assignment of benefits to non-contracting providers is not allowed. Also, non-contracting providers do not qualify for QBRP incentives.

2026 Reimbursement and Policy Memo changes

A summary of the policy memo changes is enclosed for your review. **Highlights of changes are noted in red.**

Highlights of the 2026 reimbursement are noted on page 6. We continue to build on the Quality-Based Reimbursement Program (QBRP) started in 2012 to encourage higher quality care and better control of healthcare costs. Our reimbursement program for 2026 will continue to create opportunities for providers to earn incentives by meeting the criteria as outlined in the 2026 QBRP as described on pages 8-18.





Overview of 2026 Reimbursement

Please note that along with base rate changes, additional reimbursement is available through the QBRP program where noted. (See QBRP section, pages 8-18.)

Increasing	No change	Decreasing
Anesthesia conversion factor at \$72.22 (eligible for QBRP)	Services billed by primary care and behavioral health providers located in counties with a population of 13,000 or less will receive a 5 percent add-on to the MAP on all eligible CPT codes. See county listing on page 19	Overvalued CPT codes (eligible for QBRP)
Undervalued CPT codes (eligible for QBRP)		Outlier DME codes that were overvalued
Durable Medical Equipment (DME) services (eligible for QBRP) that were undervalued		



Tiered Reimbursement

The allowances for professional services associated with the following specialties have been set at the identified percentages of the MAP (no percent changes for 2026).

85 percent*	70 percent*	50 percent*
Advanced Practice Registered Nurses (APRNs) [not including Certified Registered Nurse Anesthetists (CRNAs)]	Community Mental Health Centers	Certified Occupational Therapy Assistants (COTAs)
Chiropractors	Licensed Clinical Marriage and Family Therapists	Certified Physical Therapist Assistants (CPTAs)
Clinical Psychologists	Licensed Clinical Professional Counselors	Licensed Athletic Trainers (LATs)
Occupational Therapists	Licensed Clinical Psychotherapists	Individual Intensive Support (IIS) providers Registered Behavior Technician (RBT)
Physical Therapists	Licensed Specialist Clinical Social Workers (LSCSWs)	
Physician Assistants	Outpatient Substance Abuse Facilities	
Speech Language Pathologists	Autism Specialists (AS)	
Licensed Dietitians/Certified Diabetic Educators	Master's Level Social Workers Licensed Marriage and Family Therapist Licensed Master Level Psychologist Licensed Master Level Social Worker Licensed Master Addiction Counselor Licensed Professional Counselor	

*Amounts are rounded to the nearest \$0.01 per line item.



2026 Professional Providers QBRP

The BCBSKS Quality-Based Reimbursement Program (QBRP) is designed to promote efficient administration, improved quality, and better patient care and outcomes. Contracting BCBSKS providers have an opportunity to earn additional revenue through add-ons to allowances for meeting the defined quality metrics. BCBSKS claims data is used to determine qualification for any applicable metric requiring data.

Each year, BCBSKS seeks opportunities to best align meaningful administrative and clinical metrics with incentives to drive improved outcomes.

Important Information regarding Health Information Exchange (HIE): BCBSKS will allow QBRP incentives for HIE if the provider either transmits all five HL7 feeds or transmits a CCD, ADT and ORU (lab).

IMPORTANT REMINDER — The 2026 QBRP program is effective for services performed Jan. 1, 2026 through Dec. 31, 2026. Since the 2026 Annual CAP Report is sent out **Aug. 1, 2025** providers have several months to prepare to meet the various QBRP metrics and qualify for incentives effective Jan. 1, 2026, in accordance with the metric review schedule (see pages 10-17). Please read the requirements and metrics for the 2026 QBRP program so you are prepared to maximize the available incentives. Any subsequent pertinent information or clarification will be communicated accordingly.

Criteria for 2026

In accordance with the 2025 Policy Memo No. 1, Section XXIX. Reimbursement for Quality, this document describes the components of QBRP effective Jan. 1, 2026 through Dec. 31, 2026. This program applies to all BCBSKS CAP, PPO, FEP, EPO and BlueCard professional providers and services except for clinical lab (using codes on the Medicare clinical lab fee schedule), pharmacies and pharmaceuticals, dental services **and as determined by BCBSKS**.

This program will offer an opportunity for eligible providers to earn increased reimbursement allowances based on a three-group approach (Groups A, B, and C). These reimbursement allowances will be in addition to the established base MAPs for 2026.

Please note — Changes in CPT¹ codes (added/deleted) will be effective prospectively. QBRP adjustments/corrections will be effective the first of the following month, unless otherwise specified.

In order to pay incentives on the metrics in Groups B and C, we developed a doctor/patient registry. BCBSKS will review claims from the preceding 12 to 24 months and attribute patients to the applicable physicians based on the frequency of office visit encounters with a given physician. In the event multiple physicians have the same number of encounters for the same patient, the patient will be attributed to the physician with the most recent encounter.

1. CPT Copyright 2017 American Medical Association. All rights reserved. CPT® is a registered trademark of the American Medical Association.



2026 Professional Providers QBRP

The quality-based incentives will be earned at the individual provider level unless otherwise specified.

Qualification to participate in the incentives made available in the program will vary depending on provider type. An eligible provider may independently qualify for each metric, except when measured on a group basis. The QBRP metrics are multiplied individually by the MAP, then totaled with the MAP to determine the total reimbursement “QBRP MAP.” BCBSKS will allow the lesser of the provider’s charge or the “QBRP MAP.”

In order for incentive payments to begin Jan. 1, 2026, BCBSKS will use information on file or available from outside sources to determine which incentives providers qualify for based on unique provider individual NPI numbers, billing NPI numbers or tax ID, whichever is applicable.

Please note — BCBSKS built enhancements to the provider information portal to include self-service QBRP information.

All metrics, with the exception of the Provider Information Portal, will be reviewed on a semi-annual basis and any incentives earned will be effective either Jan. 1, 2026 or July 1, 2026 as applicable.

We will conduct a QBRP refresh in the first and second quarters (depending on the metric) of 2026 for an effective date of July 1, 2026 to determine if providers are continuing to meet the performance standards for the metric(s) earned for the incentive payments effective Jan. 1, 2026. If the refreshed data indicates a provider is no longer meeting the performance standards for the metric(s), then the associated QBRP incentive(s) will cease beginning July 1, 2026 for the remainder of the year. Confirmation of QBRP measure can be obtained real time on the provider portal. The portal will reflect effective and termination dates of all applicable QBRP measures.

QBRP PREREQUISITES AND GROUPS FOR PROVIDERS	
QBRP Participation Prerequisites	Providers must conduct business with BCBSKS electronically (i.e. turn off paper remittance advices (R/A)). Providers must submit all eligible claims electronically, accept electronic remittance advice documents (ERAs: either through receiving the ANSI 835 transaction or by downloading the RA from the BCBSKS secured website (and turn off printed RAs). Provider must be in good standing with BCBSKS to qualify for and receive QBRP. QBRP will cease if provider is no longer in good standing.
Group A	Applies to all eligible contracting professional providers and to all eligible/covered CPT and HCPCS codes (excludes Clinical Lab [using codes on Medicare clinical lab fee schedule], Pharmacy and Pharmaceuticals, Dental services, and determined by BCBSKS).
Group B	Applies to all prescribing provider types (MD, DO, DPM, OD, PA, APRN, CRNA) as applicable to the measure and to all eligible/covered CPT codes (excludes Clinical Lab [using codes on the Medicare clinical lab fee schedule], Pharmacy and Pharmaceuticals, Dental services, and determined by BCBSKS).
Group C	Applies to all prescribing provider types (MD, DO, DPM, OD, PA, APRN, CRNA) as applicable to the measure and only to covered E&M codes.



2026 Professional Providers QBRP

Metric	%	Group	Description	Qualifying Period
Electronic Self-Service (ES3))	2.0 (ES3) (96% or >)	A	Must use Availity portal or ANSI 270/271 & 276/277 transactions to electronically obtain BCBSKS patient eligibility, benefit, and claims status information. Electronic access must meet one of the percentages at left compared to the provider's total number of queries to BCBSKS, regardless of the mode of inquiry to receive the corresponding incentive. Providers billing under a single tax ID number will have their inquiries combined for determining the applicable percent.	Semi-annual
Provider Information Portal (PRT)	2.5	A	Must verify and attest to provider information every 90 days according to the qualifying schedule below. Each individual provider's information within a group must be verified. Verification must be completed within the BCBSKS provider information portal. Providers who do not attest every 90 days will be suppressed from the provider directory.	Every 90 days
Electronic Provider Message Board (EPM)	1.0	A	Must sign agreement to supply needed information for claim processing review/completion. Time frame for return of the requested information must be within the agreement time frame (15 days) through the provider message board portal.	Semi-annual
MiResource (MiR) (Applies to Behavior Health Providers only)	0.5	A	As of March 31, 2026 this measure will be discontinued. Refer to additional details below.	Semi-annual
Certified Community Behavioral Health Clinic (CCBHC)	3.0	A	Must provide signed documentation and certificate of approval from Kansas Department for Aging and Disability Services in order to be eligible.	Semi-annual

Qualifying for Electronic Self-Service Incentive (ES3, ES2)

The following is a list of incentive effective dates and the corresponding qualifying periods:

Qualifying Period	Incentive begins
Aug. 1 - Oct. 31, 2025	Jan. 1, 2026
Feb. 1 - April 30, 2026	July 1, 2026



2026 Professional Providers QBRP

Qualifying for Provider Information Portal (PRT)

The following is a list of incentive effective dates and the corresponding qualifying periods.

Qualifying Period	Incentive
Sept. 2025 - Nov. 2025	Jan. 1, 2026
Dec. 2025 - Feb. 2026	April 1, 2026
March 2026 - May 2026	July 1, 2026
June 2026 - Aug. 2026	Oct. 1, 2026

Qualifying for Electronic Provider Message Board (EPM)

The following is a list of incentive effective dates and the corresponding qualifying periods:

Qualifying Period	Incentive
June 2025 - Nov. 2025	Jan. 1, 2026
Dec. 2025 - May 2026	July 1, 2026
If the electronic provider message board (EPM) is used as outlined in the EPM agreement, one-time authorization allows for continuation of qualifying period without interruption.	

Qualifying for MiResource Incentive (MiR)

The following is a list of incentive effective dates and the corresponding qualifying periods:

NOTE: MiResource will be discontinued after March 31, 2026. Providers who have qualified for MiResource as of Jan. 1, 2026 will receive this incentive through 2026. New providers will not qualify after March 31, 2026.

Qualifying Period	Incentive begins
June 2025 - Nov. 2025	Jan. 1, 2026
Dec. 2025 - March 2026	July 1, 2026

Qualifying for Certified Community Behavioral Health Clinic Incentive (CCBHC)

The following is a list of incentive effective dates and the corresponding qualifying periods:

NOTE: A Certified Community Behavioral Health Clinic (CCBHC) is a specialized type of clinic focused on providing comprehensive mental health and substance use disorder services. These clinics are designed to improve access to care, regardless of diagnosis and insurance status. For more information, visit [KDADS website](#)

Qualifying Period	Incentive begins
June 2025 - Nov. 2025	Jan. 1, 2026
Dec. 2025 - May 2026	July 1, 2026



2026 Professional Providers QBRP

Metric	%	Group	Description	Qualifying Period
CPT II Codes (CAT2)	.50	A	CPT-II codes are supplemental procedure codes that are used to identify clinical components not associated with a relative value unit (RVU). These codes are often used to identify results of HbA1c tests, eye exams, blood pressure, medication reconciliation, cholesterol tests, and prenatal and postpartum visits for example. By providing these supplemental procedure codes on claims, there will be a decreased need for medical records while producing a more accurate HEDIS score for applicable measures. The number of eligible CPT Category II codes submitted during the measurement period, must be greater than or equal to 30 encounters to be eligible, calculated at the individual provider level. A complete list of QBRP eligible CPT-II codes can be found on pages 27-28 in the HEDIS Coding and Reference Guide for QBRP .	Semi-annual
ICD-10 SDoH Codes (ZZZ)	.75	A	Select ICD-10 Z codes can be useful diagnosis codes used to help identify social determinants of health (SDoH) as well as 'history of' procedures or 'acquired absence of' codes used to support HEDIS. By providing these supplemental diagnoses codes on claims, social factors that impose barriers to a person's health and wellness can be identified, allowing appropriate resources to be allocated to better address the social needs of our members. The number of eligible ICD-10 Z codes submitted during the measurement period, must be greater than or equal to 30 encounters to be eligible, calculated at the individual provider level. A complete list of QBRP eligible ICD-10 Z codes can be found on pages 23-26 in the HEDIS Coding and Reference Guide for QBRP .	Semi-annual

Qualifying for CPT II Codes (CAT2)/ ICD-10 SDoH Codes (ZZZ) Incentives

The following is a list of incentive effective dates and the corresponding qualifying periods:

Qualifying Period	Incentive begins
July 1, 2024 - June 30, 2025 (as paid through Sept. 30, 2025)	Jan. 1, 2026
Jan. 1, 2025 - Dec. 30, 2025 (as paid through March 31, 2026)	July 1, 2026



2026 Professional Providers QBRP

Metric	%	Group	Description	Qualifying Period
CCD or HIE HL7 use to State-approved HIO's Each provider must have a user ID and HL7 real-time connectivity to qualify. The provider must send all five HL7 V2 feeds (a. - e.) OR CCD complete (f.) to receive any incentives.				
a -HIE HL7 V2 (ADT) Demographic, admissions, discharges, transfers	3.0	B	Must send all records for demographics, admissions, discharges, and transfers. This includes office visits.	Semi-annual
b -HIE HL7 V2 (OPN via MDM) Progress notes		B	Must send progress notes on all patient encounters.	Semi-annual
c -HIE HL7 V2 (ABS via ADT) Vitals, Diagnosis, Procedure coding		B	Must send vitals, diagnosis and/or procedure coding on all patient encounters.	Semi-annual
d -HIE HL7 V2 (LAB via ORU) Lab reporting		B	Must send all lab reports on all patient lab tests.	Semi-annual
e -HIE HL7 V2 (MED via RDE) Medication records		B	Must send medication administration on all patient encounters.	Semi-annual
f -CCD complete/all data (KCCD)		B	Must send complete and comprehensive Continuity of Care Document (CCD HL7 V3) record, HL7 V2 ADT, and HL7 V2 lab (ORU).	Semi-annual

Qualifying for HIE Incentives (ADT, OPN, ABS, LAB, MED, CCD)

The following is a list of incentive effective dates and the corresponding qualifying periods:

Qualifying Period	Incentive begins
May 1 - Oct. 31, 2025	Jan. 1, 2026
Nov. 1 - April 30, 2026	July 1, 2026



2026 Professional Providers QBRP

Metric	%	Group	Description	Qualifying Period
Registry Data (REG) (*applies only to anesthesia, pathology, radiology, urology, chiropractors, optometrists, ophthalmologists, arthritis, rheumatology, pulmonary, gastroenterology, and ear, nose, and throat.)	3.0	B*	Must send sufficient patient information to meet CMS quality measures to a CMS-approved registry. Electronic submission is preferred. Providers under a group qualify as a group. Must send report to BCBSKS demonstrating acceptance of submitting data and meeting registry requirements. *Note — Although not prescribing providers, chiropractors will be eligible for this Group B measure. Quality Improvement Activity (approved by BCBSKS) for Primary Spine Providers (DC, MD, DO) may be included at a later time.	Semi-annual
Access Formulary Electronically (EEX)	.75	B	Must electronically access member benefit information for eligibility, formulary, and medication history a minimum of 120 times per quarter.	Semi-annual
Generic Utilization Rate (GUR)	.75	B	Minimum generic prescribing of 85% (for all BCBSKS members with a prescription drug benefit).	Semi-annual
Anesthesia Performed in a Health System with a Level 1 Trauma Center (ATC)	8.5	B	Must be dedicated on-site 24 hours a day, seven days a week, 365 days a year to a level 1 trauma center facility with a PICU and NICU and involved with teaching anesthesia residents.	Semi-annual
Breast Cancer Screening (BCS)	1.0	B	The percentage of women 50-74 years of age (52-74 as of the end of the measurement period) who had a mammogram anytime in the past two years. Must be greater than or equal to 75% to meet the metric, calculated at the provider group level having at least five attributed/eligible patients for breast cancer screening. Individual providers in the group must have at least one attributed/eligible patient to receive incentive. Note — OB/GYN and Geriatrician providers can qualify as well.	Semi-annual
Cervical Cancer Screening (CCS)	1.5	B	The percentage of women 21-64 years of age who were screened for cervical cancer. Must be greater than or equal to 75% to meet the metric, calculated at the provider group level having at least five attributed/eligible patients. Individual providers in the group must have at least one attributed/eligible patient to receive incentive.	Semi-annual
Colorectal Cancer Screening (COL)	1.0	B	The percentage of adults 45-75 years of age (46-75 as of Dec. 31 of the measurement year) who had appropriate screening for colorectal cancer. Members with multiple screenings will be counted only once as appropriately screened. Must be greater than or equal to 60% to meet the metric, calculated at the provider group level having at least five attributed/eligible patients. Individual providers in the group must have at least one attributed/eligible patient to receive incentive.	Semi-annual



2026 Professional Providers QBRP

Metric	%	Group	Description	Qualifying Period
Low-Back Pain (LBP)	1.0	B	<p>The percentage of members with a primary diagnosis of low back pain who did not have an imaging study (plain X-ray, MRI, CT scan) within 28 days of diagnosis. The percentage is reported as an inverted rate, therefore, a higher reported rate indicates appropriate treatment of low back pain (i.e. proportion for whom imaging studies did not occur). Must be greater than or equal to 90% to meet the metric, calculated at the provider group level having at least five attributed/eligible patients. Individual providers in the group must have at least one attributed/eligible patient to receive incentive.</p> <p>Note — The member is attributed to the provider associated with the earliest date of service for an eligible encounter with a principal diagnosis of low back pain, regardless of specialty. Although not prescribing providers, chiropractors will be eligible for this Group B measure.</p>	Semi-annual
Well-Child visits (W30A) 6 or more visits in first 15 months	1.0	B	<p>The percentage of members 0-15 months who had six or more well-child visits with a PCP during the first 15 months of life. Must be greater than or equal to 80% to meet the metric, calculated at the provider group level having at least 5 attributed/eligible patients. Individual providers in the group must have a least one attributed/eligible patient to receive incentive.</p>	Semi-annual
Well-Child visits (W30B) 2 or more visits during months 15-30	1.0	B	<p>The percentage of members 15-30 months of age who had two or more well-child visits with a PCP between 15-30 months of life. Must be greater than or equal to 80% to meet the metric, calculated at the provider group level having at least 5 attributed/eligible patients. Individual providers in the group must have a least one attributed/eligible patient to receive incentive.</p>	Semi-annual
Well-Child visits (WCV) 1 or more visits for members 3-21 years of age	1.0	B	<p>The percentage of members 3-21 years of age who had at least one comprehensive well-care visit with a PCP or OB/GYN practitioner during the measurement year. Must be greater than or equal to 50% to meet the metric, calculated at the provider group level having at least 5 attributed/eligible patients. Individual providers in the group must have at least one attributed/eligible patient to receive incentive.</p>	Semi-annual
Statin Therapy for Patients with Cardiovascular Disease (SPC)	1.0	B	<p>The percentage of males 21-75 years of age and females 40-75 years of age during the measurement year who were identified as having clinical atherosclerotic cardiovascular disease (ASCVD) and who were dispensed at least one high-intensity or moderate-intensity statin medication during the measurement year. Must be greater than or equal to 80% to meet the metric, calculated at the provider group level having at least five attributed eligible patients. Individual providers in the group must have at least one attributed/eligible patient to receive incentive.</p>	Semi-annual



2026 Professional Providers QBRP

Metric	%	Group	Description	Qualifying Period
Statin Therapy for Patients with Diabetes (SPD)	1.0	B	The percentage of members 40-75 years of age during the measurement year with diabetes who do not have clinical atherosclerotic cardiovascular disease (ASCVD) and were dispensed at least one statin medication of any intensity during the measurement year. Must be greater than or equal to 65% to meet the metric, calculated at the provider group level having at least five attributed eligible patients. Individual providers in the group must have at least one attributed/eligible patient to receive incentive.	Semi-annual
Eye Exams for Patients with Diabetes (EED)	1.0	B	The percentage of members 18-75 years of age as of the end of the measurement year with diabetes (type 1 or type 2) who had an eligible screening or monitoring for diabetic retinal disease as identified by administrative data. Must be greater than or equal to 50% to meet the metric, calculated at the provider group level having at least five attributed eligible patients. Individual providers in the group must have at least one attributed/eligible patient to receive incentive.	Semi-annual
Avoidance of Antibiotic Treatment in Members with Acute Bronchitis (AAB)	1.5	C	The percentage of members 3 months of age and older with a diagnosis of acute bronchitis/bronchiolitis who were not dispensed an antibiotic prescription. Must be greater than or equal to 50% to meet the metric, calculated at the provider group level having at least five attributed/eligible patients. Individual providers in the group must have at least one attributed/eligible patient to receive incentive. Note — The member is attributed to the provider associated with the earliest date of service for an eligible encounter with a principal diagnosis of acute bronchitis, regardless of specialty.	Semi-annual
Appropriate Testing for Members with Pharyngitis (CWP)	1.5	C	The percentage of members 3 years of age and older who were diagnosed with pharyngitis, dispensed an antibiotic and received a group A streptococcus (strep) test for the episode. A higher rate represents better performance (i.e. appropriate testing). Must be greater than or equal to 70% to meet the metric, calculated at the provider group level having at least five attributed/eligible patients. Individual providers in the group must have at least one attributed/eligible patient to receive incentive. Note — The member is attributed to the provider associated with the earliest date of service for an eligible encounter with a principal diagnosis of pharyngitis, regardless of specialty.	Semi-annual
Appropriate Treatment for Members with Upper Respiratory Infection (URI)	1.5	C	The percentage of members 3 months of age and older who were given a diagnosis of upper respiratory infection and were not dispensed an antibiotic prescription. Must be greater than or equal to 80% to meet the metric, calculated at the provider group level having at least five attributed/eligible patients. Individual providers in the group must have at least one attributed/eligible patient to receive incentive. Note — The member is attributed to the provider associated with the earliest date of service for an eligible encounter with a principal diagnosis of URI, regardless of specialty.	Semi-annual



2026 Professional Providers QBRP

Metric	%	Group	Description	Qualifying Period
Follow-up After Hospitalization for Mental Illness (FUH)	0.5	C	<p>The percentage of discharges for members 6 years of age and older who were hospitalized for treatment of a selected mental illness or intentional self-harm diagnosis and who had a follow-up visit with a mental health provider within 7 days after discharge. Must be greater than or equal to 70% to meet the metric, calculated at the provider group level having at least five attributed eligible patients. Individual providers in the group must have at least one attributed/eligible patient to receive incentive.</p> <p>Note — The member is attributed to the provider associated with the earliest date of service of an eligible encounter with a principal diagnosis of mental illness or intentional self-harm, regardless of the specialty.</p>	Semi-annual

Qualifying for Registry Data (REG) Incentives

The following is a list of incentive effective dates and the corresponding qualifying periods:

Qualifying Period	Incentive begins
June 1 - Nov. 30, 2025	Jan. 1, 2026
Dec. 1, 2025 - May 31, 2026	July 1, 2026

Qualifying for Access Formulary Electronically, Generic Utilization Rate Incentives (EEX, GUR)

The following is a list of incentive effective dates and the corresponding qualifying periods:

Qualifying Period	Incentive begins
Sept. 1 - Nov. 30, 2025	Jan. 1, 2026
March 1 - May 31, 2026	July 1, 2026



2026 Professional Providers QBRP

QBRP CHANGES FOR 2026		
Metric	Change	Reason
MiResource (MiR)	Sunset incentive	MiResource will be discontinued after March 31, 2026
Certified Community Behavioral Health Clinic (CCBHC)	New incentive	Replaces MiResource

Rural Access Counties

The following (page 19) is a list of counties with a population of 13,000 or less that qualify for a Rural Access incentive. The 5% rural access payment is separate and distinct from QBRP. However, the same QBRP procedure code exclusions apply to the rural access incentive. (Source: U.S. County 2024 Estimated Census)

Please note — changes will be effective the first of the following month, unless otherwise specified.



Rural Access Counties

County	Population
Allen	12,425
Anderson	7,908
Barber	4,070
Brown	9,142
Chase	2,507
Chautauqua	3,339
Cheyenne	2,646
Clark	1,873
Clay	7,969
Cloud	8,723
Coffey	8,301
Comanche	1,694
Decatur	2,716
Doniphan	7,575
Edwards	2,731
Elk	2,436
Ellsworth	6,316
Gove	2,658
Graham	2,370
Grant	7,097
Gray	5,730
Greeley	1,152
Greenwood	5,871
Hamilton	2,488
Harper	5,413
Haskell	3,591
Hodgeman	1,673
Jewell	2,899
Kearny	3,808
Kingman	6,946
Kiowa	2,436
Lane	1,482
Lincoln	2,928
Linn	9,841
Logan	2,694

County	Population
Marion	11,670
Marshall	9,950
Meade	3,892
Mitchell	5,803
Morris	5,297
Morton	2,485
Nemaha	10,062
Ness	2,617
Norton	5,335
Osborne	3,353
Ottawa	5,853
Pawnee	6,012
Phillips	4,733
Pratt	9,137
Rawlins	2,432
Republic	4,613
Rice	9,284
Rooks	4,748
Rush	2,810
Russell	6,620
Scott	4,914
Sheridan	2,397
Sherman	5,796
Smith	3,541
Stafford	3,901
Stanton	2,071
Stevens	5,035
Thomas	7,802
Trego	2,774
Wabaunsee	7,112
Wallace	1,472
Washington	5,572
Wichita	2,072
Wilson	8,398
Woodson	3,111

Visit us at bcbsks.com



1133 SW Topeka Blvd, Topeka, KS 66629

An independent licensee of the Blue Cross Blue Shield Association.